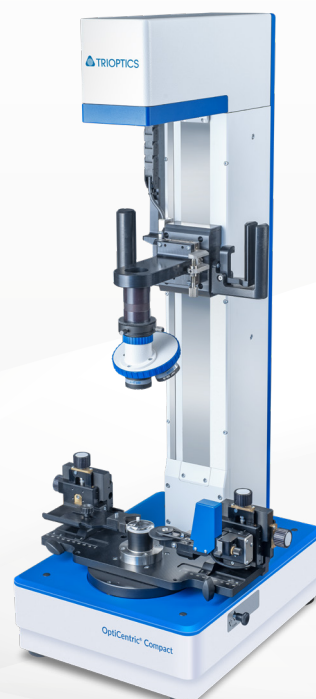


OptiCentric[®] Compact

Quick manual lens centration
testing and alignment



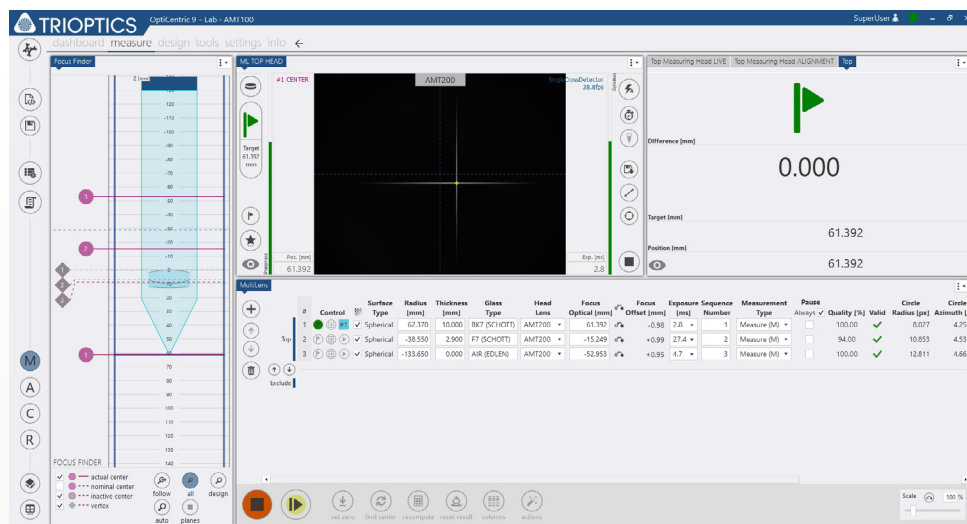
OptiCentric® Compact

The OptiCentric® Compact is designed for quick manual centration testing and alignment in the optical workshop. It is available in two models to suit different applications:

- **OptiCentric® Compact** is most ideal for measuring the centration of single lenses with respect to the lens edge using a motorized lens rotation device or for measuring cylindrical lenses using the CylinderCheck module.
- **OptiCentric® Compact AB** is recommended for manual lens bonding and cementing using a manually driven rotary air bearing.

OptiCentric® Compact offers quick working processes as start-up requires only a few settings and the visual feedback from the software display provides immediate feedback for the manual focusing of the measurement head. The clear user interface of the new software simplifies operation as it provides direct access and control of frequently used functions.

With its excellent measurement accuracy of 0.1 μm and the manual z-axis with coarse and fine focusing, OptiCentric® Compact offers a great price/performance ratio. The small footprint of the device and its All-in-One PC with included touch monitor require minimal workspace. Clean room compatibility with the standard of ISO 5 makes it possible to test and bond lenses in clean environments.



Software interface during measurements using a manual driven rotary air bearing

Key features

- Cost-effective centration measurement system with established TRIOPTICS measurement technology
- Quick and effortless measurement and alignment supported by intuitive software procedures
- High measurement precision of up to 0.1 μm
- Clean room compatibility ISO 5

Technical data

	OptiCentric® Compact	OptiCentric® Compact AB
Measurement accuracy for centration in VIS	< 0.1 µm	< 0.1 µm
Air bearing	No	Yes, manually driven
Sample unit	Kinematic interface for optional mounting: <ul style="list-style-type: none"> ▪ Motorized lens rotation device ▪ CylinderCheck module 	Includes manually driven rotary air bearing Kinematic interface for optional mounting: <ul style="list-style-type: none"> ▪ Motorized lens rotation device ▪ CylinderCheck module
Sample diameter	Standard: 120 mm Optionally up to 200 mm	280 mm
Max. sample weight	n.a.	20 kg
Typ	Table top	Table top
Dimensions (H x W x T)	820 mm x 850 mm x 400 mm	820 mm x 850 mm x 400 mm
Weight	36 kg	36 kg





TRIOPTICS GmbH

Strandbaddamm 6
22880 Wedel
Germany

+49 4103 18006-0
sales@trioptics.com
www.trioptics.com

